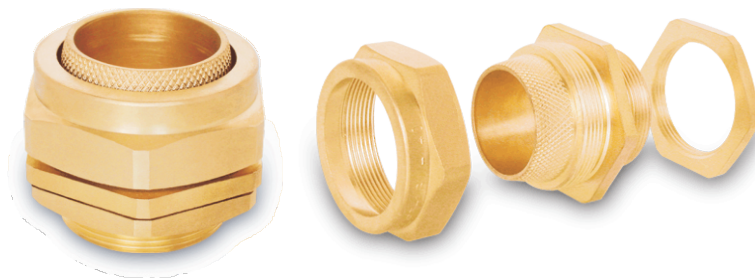


## BW 2 Part Cable Gland



**Sizes :**

20 mm to 90 mm

**Use :**

Suitable for SWA, Plastic or Rubber (Elastomer) Sheathed Cable. The knurled cone prevents rotation of wire on tightening.

**Application :**

Dry indoor application for armoured cables.

**Sizes :**

20 mm to 90 mm S & L

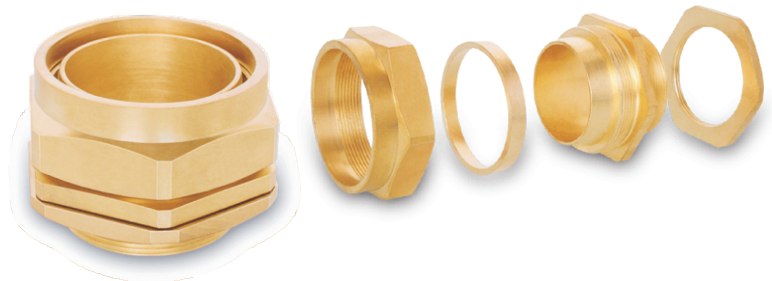
**Use :**

Suitable for SWA, Plastic or Rubber Sheathed Cable. Manufactured to BS6121.

**Application :**

Indoor application.

## BW 4 Part Cable Gland



**Sizes :**

20 mm to 90 mm S & L

**Use :**

Suitable for SWA, Plastic or Rubber Sheathed Cable.

**Application :**

Dry indoor application for armoured cables.

## CW 3 Part Cable Gland



**Sizes :**

20 mm to 90 mm S & L

**Use :**

Suitable for SWA, Plastic or Rubber Sheathed Cable. The outer seal rated to IP66 grips sheath of cable.

**Application :**

Indoor / Outdoor application.

**Sizes :**

20 mm to 90 mm S & L

**Use :**

Suitable for SWA, Plastic or Rubber Sheathed Cable.

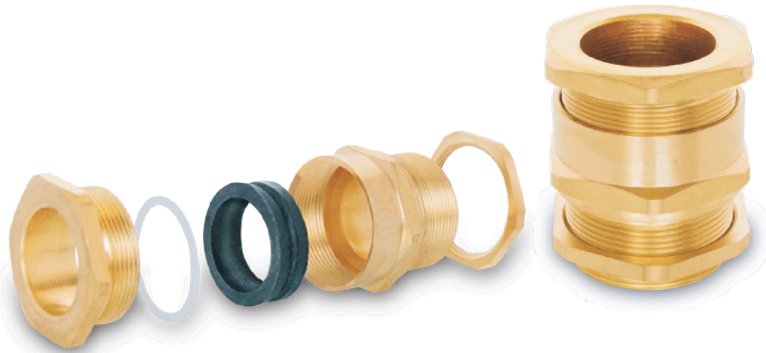
**Application :**

Dry indoor application for armoured cables.

## CW 4 Part Cable Gland



## A1/A2, A2 Type Cable Gland



**Sizes :** 16 mm to 110 mm S & L

**Use :** Suitable for use on Rubber or Plastic, un-armoured cable. Manufactured to BS6121.

**Application :** Indoor application for un-armoured cables.

**Sizes :** 20 mm to 90 mm S & L

**Use :** Suitable for all weather and effects the cable outer sheath & the gland nut, between the inner cable sheath & the gland body. Rated to IP66

**Application :** All weather.



## E1W Type Cable Gland



## Alco Type Cable Gland



**Sizes :** G 204 to G 755

**Use :** Suitable for SWA, Plastic & Rubber Sheathed Cable.

**Application :** Dry indoor application for armoured cable.

**Availability :** Available in Brass with Nickel Plated.

**Sizes :** PG 7 to PG 48

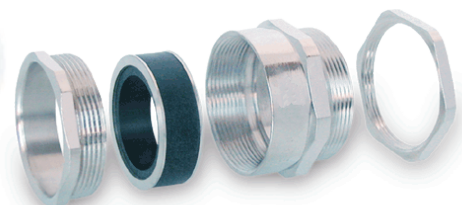
**Use :** Available with strain relief facility with round or hex intermediate sockets. Available in long and short anti threads.

**Application :** DIN 46320/46255

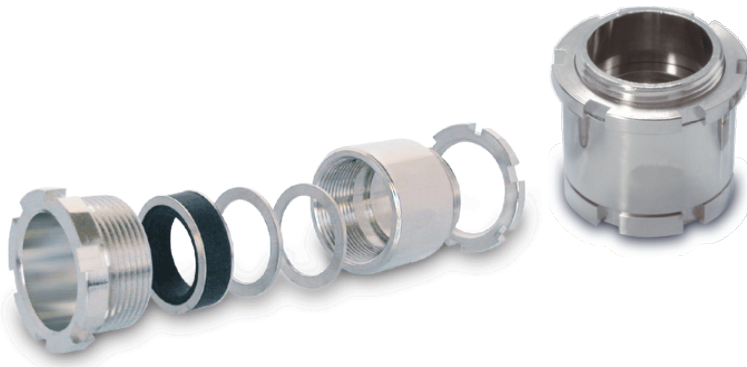
**Availability :** Available in Brass with Nickel Plated.



## PG Type Cable Gland



## Marine Cable Gland



**Sizes :**

10 mm to 70 mm

**Use :**

Used for various Marine applications.

**Application :**

Indoor / Outdoor application.

**Availability :**

Available in Brass with Nickel Plated.

**Sizes :**

0 to 7

**Use :**

For indoor use. Two piece handling. No loose parts. Freely rotating captive cone.

**Application :**

Indoor

**Availability :**

Available in Brass with Nickel Plated.



## BRW Cable Gland

**Sizes :**

16mm to 32 mm

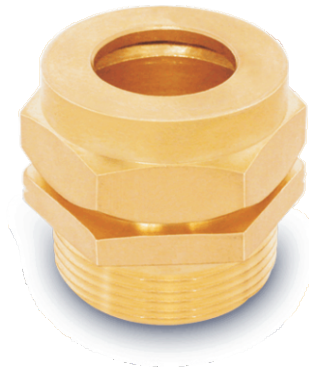
**Use :**

As satisfactory method of securing flexible cables.

**Application :**

Indoor application for flexible cable.

## TRS Cable Gland



**Sizes :**

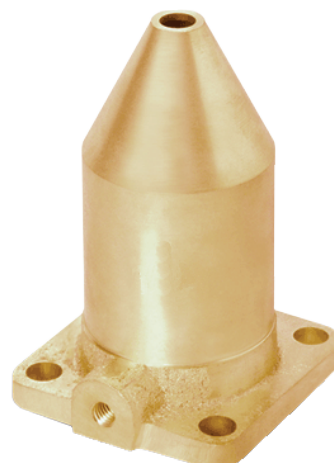
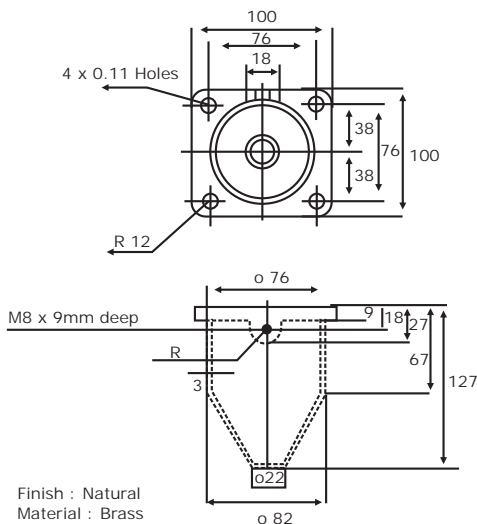
16mm to 32 mm

**Use :**

As satisfactory method of securing flexible cables.

**Application :**

Indoor application for flexible cable.



## Wipping Gland

**Sizes :**

Size as per drawing & specification.

## Cable Gland Kits



**Sizes :** All Sizes

**Packing :** BW, CW & E1W Types of Cable Glands in all sizes.

**Contains :** Gland, Earth Tag Lock Nut & PVC Shroud.

**Sizes :** M16 to M32, 3/4" to 2"

**Use :** Where conduit tube and cable enters adaptable box to ensure a secure fit and smooth passage. Females are internally threaded whereas males are externally threaded. Available in long and short pattern.

## Brass Bushes



**Sizes :** 20mm, 25mm, 32mm, 3/4", 1", 1 1/4", 1 1/2" & 2"

**Application :** Male/Female Thread with/without lock nut and screw.

## Flexible Adapters



**Sizes :** All Sizes

**Application :** Available in single core and joints.

## Adapters





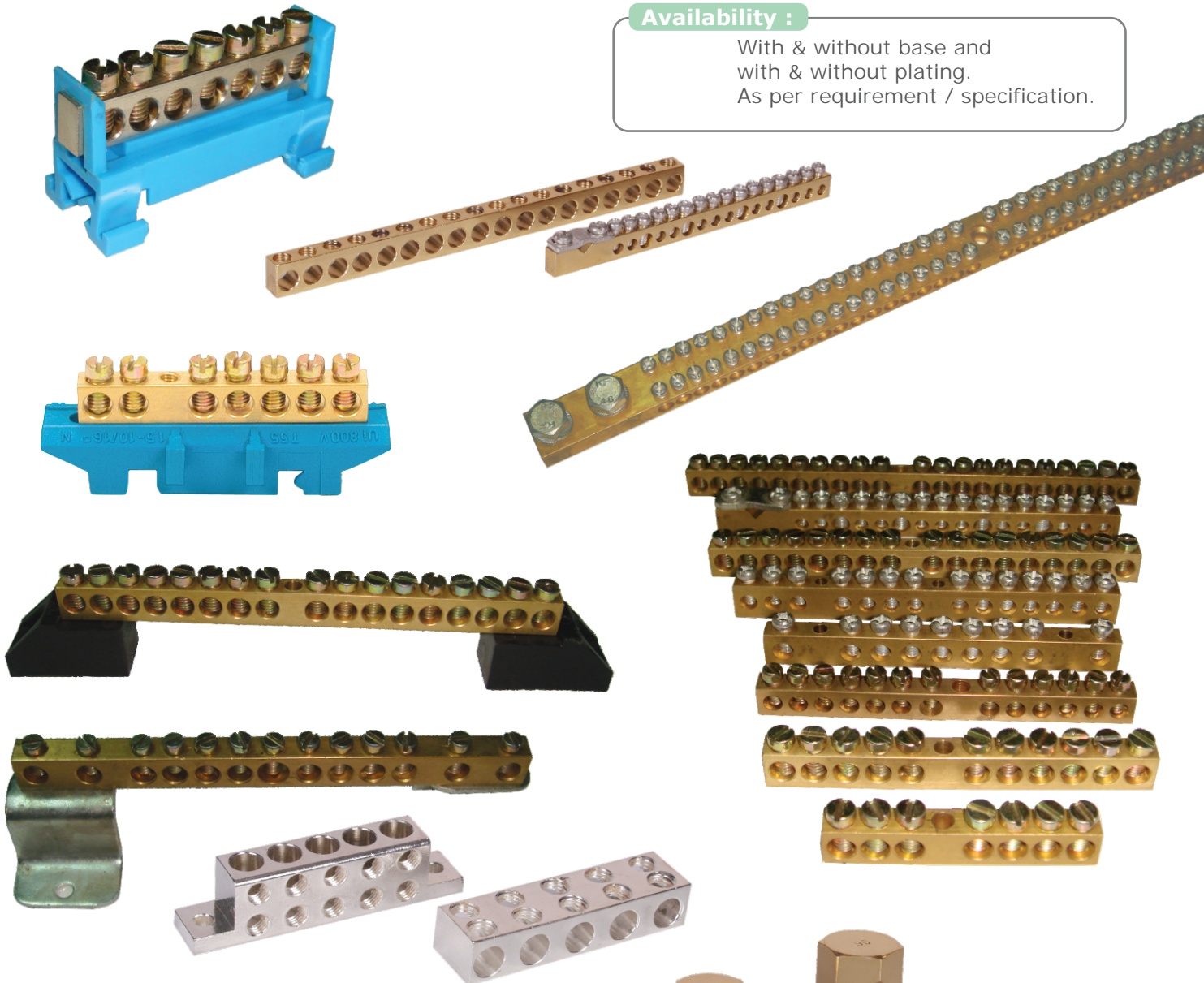
## Brass Neutral Links

**Sizes :**

2 way to 1 meter length

**Availability :**

With & without base and with & without plating. As per requirement / specification.



## Split Bolts

**Sizes :**

10mm to 240 mm

**Application :**

Brass Split Bolts are made with high tensile brass. Pressure pads are made from extruded bars to prevent pads from cracking.

**Availability :**

Available in Natural Brass, Brass with Copper plated & Aluminium.







## Brass Connectors as per Drawings/Specifications



## EARTHING ACCESSORIES

### Copper Bonded Earth Rods

**Sizes :**

1/2" x 1200 mm, 1/2" x 1500 mm,  
1/2" x 1800 mm, 1/2" x 2400 mm  
5/8" x 1200 mm, 5/8" x 1500 mm,  
5/8" x 1800 mm, 5/8" x 2400 mm,  
5/8" x 3000 mm  
3/4" x 1200 mm, 3/4" x 1500 mm,  
3/4" x 1800 mm, 3/4" x 2400 mm,  
3/4" x 3000 mm

**Availability :**

99.9% Pure Electrolytic Copper  
Bonded on a High Tensile  
Low Carbon Steel.



### Driving Heads

**Sizes :**

1/2, 5/8", 3/4"

**Availability :**

Available in High Tensile Steel.



### Couplers

**Sizes :**

5/8", 3/4", 14mm, 16mm &  
20 mm (Dia).  
Length 50mm, 60mm & 70mm

**Availability :**

Available in round, hexagonal &  
center hexagonal shapes in Brass  
& Gun Metal.



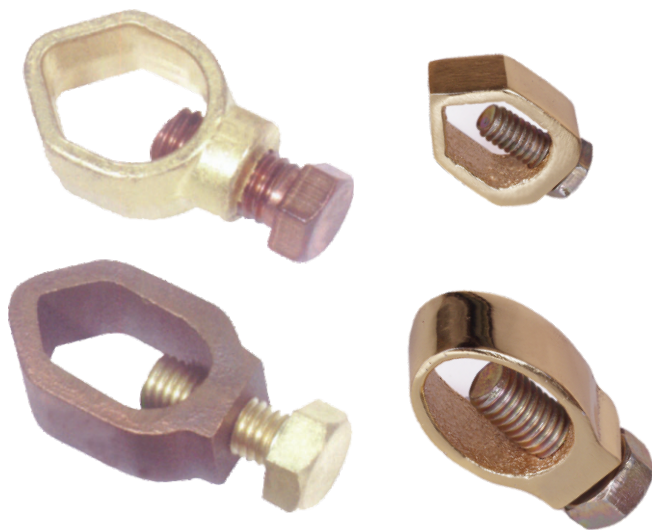
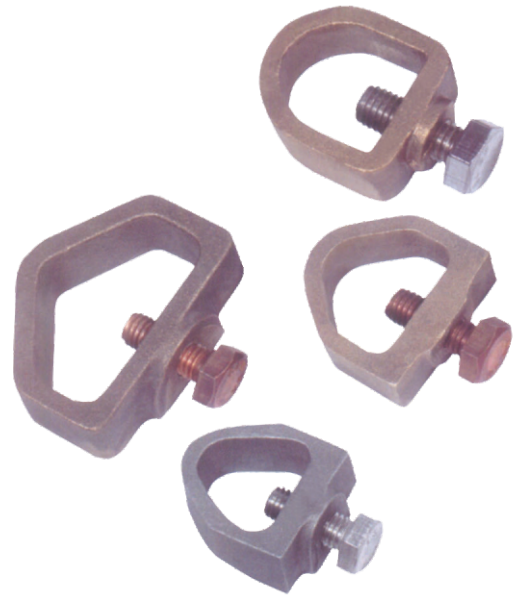
## Rod to Tape Clamp (A Clamp)

**Sizes :**

1/2", 5/8", 3/4" & 1"

**Availability :**

Available in Brass & Gun Metal with Bolt as per requirement.



## Earth Rod to Cable Clamp (G-Type)

**Sizes :**

1/2", 3/8", 5/8", 3/4" & 1"

**Availability :**

Available in Brass & Gun Metal with Bolt as per requirement.

## U Bolt Clamp

**Sizes :**

16mm, 25mm, 30mm, 38mm, 60mm

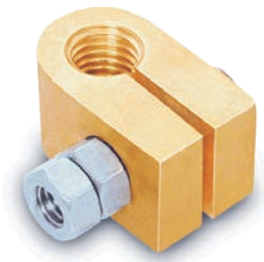
**Application :**

It is used for all rod dia. from 16mm to 50mm. The U bolt can have either or double back plate for Copper tape or Cable.

**Availability :**

Available in Brass & Gun Metal.





### Split Connected Clamp

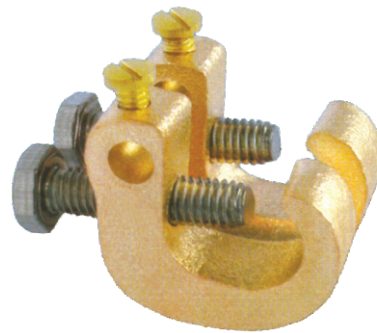
**Sizes :** 9.5mm, 16mm & 20mm

**Availability :** Available in gun metal & naval brass with bolt washer & nuts.

### Re-Bar Clamp

**Sizes :** 18 mm

**Application :** Used for bonding to re-inforcing bar, steam pipes and handrails.



### Earthing Plate

**Sizes :** 600 x 600 x 1.5 mm,  
600 x 600 x 3 mm,  
900 x 900 x 1.5 mm,  
900 x 900 x 3 mm,

**Availability :** Available in Pure Electrolytic Copper.

### Earthing Flat Tape

**Sizes :** 25 x 3, 50 x 6, 75 x 10, etc.

**Availability :** Available in Pure Electrolytic Copper and Hot Dipped Galvanized MS Flats.



# LIGHTNING PROTECTION

## Lightning Arrestor

**Sizes :**

As per requirement

**Availability :**

Air Terminal Base with multiple points & Rod in Copper / Brass.



## DC Tape



**Sizes :**

25x3, 25x6, 50x3, 50x6 & 31x6

**Availability :**

Available in Brass & Gun Metal with screw as per requirement.

## DC Clip

**Sizes :**

8 mm

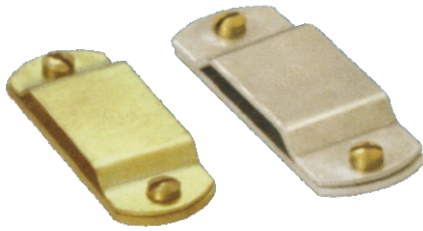
**Availability :**

Available in Gun Metal with screw as per requirement.



LIGHTNING PROTECTION

## Tape Clip



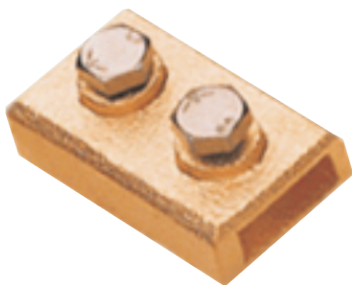
**Sizes :** 20x3 & 25x3

**Availability :** Available in Brass, Aluminium & Copper with Screw as per requirement.

## Square Tape Clamp

**Sizes :** 25x3, 25x6, 50x3, 50x6

**Availability :** Available in Brass, Gun Metal & Aluminium with screw as per requirement.



## Oblong Test Clamp

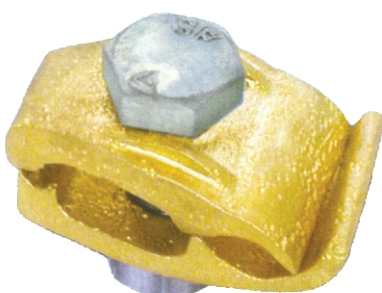
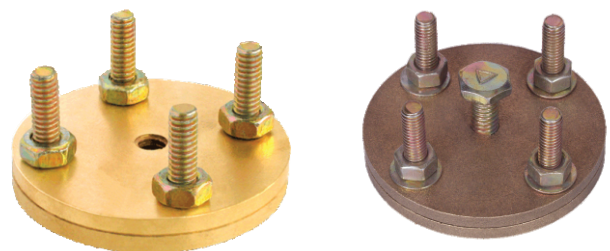
**Sizes :** 25x3, 38x6, 50x6

**Availability :** Available in Brass & Gun Metal with Bolt as per requirement.

## Test Bond Clamp

**Sizes :** 25x3, 25x6, 50x3, 50x6

**Availability :** Available in Brass, Gun Metal & Aluminium with screw as per requirement.



## Tower Earth Clamp

**Sizes :** 16mm<sup>2</sup> & 70mm<sup>2</sup>

**Availability :** Available in Brass & Gun Metal with Bolt as per requirement.





**NYLEX GROUP**  
ESTD 1966

*Nylex*  
TRADERS



**MORGAIN** Inc.



**INTERNATIONAL**

*Nylex*

Electricals & Electronics  
Pvt. Ltd.

## PRODUCT APPLICATION GUIDE

The illustration below is designed to demonstrate the position and relationship of individual components

It is not intended to represent an actual or typical scheme conforming to any National Code of Practice. The drawing is not to scale.

